

LITE-FLOOR
LITE-FLOOR XTRAGRIP

Anti-slip flooring

SYSTEMS

LITE-FLOOR LITE-FLOOR XTRAGRIP

Glass flooring safe and transparent floors

Description

LITE-FLOOR usually consists of:

- a minimum of two load-bearing components. LITE-FLOOR consists of two or more glass layers with one or more polyvinyl butyral (PVB) interlayers;
- a protective glass which may include a coating designed to improve anti-slip properties.

All components are laminated.

Applications

LITE-FLOOR glass flooring provides excellent mechanical resistance to impact. LITE-FLOOR is used to make glass floors and stairs.

This very safe flooring is perfect in the home, the service sector and all locations open to the public such as hotels, and restaurants, offices and the like.

LITE-FLOOR is designed solely for use by people. It is not intended to carry permanent loads.

Advantages

LITE-FLOOR... guaranteed design and safety

• A standardised product

Flooring and staircase units comply with the requirements of standard EN ISO 12543.

• An anti-slip product

To reduce the dangers of slippage, the upper surface of the glass can be coated with anti-slip SECURIT CONTACT.

• A design product

The units can be coloured or screen-printed. They add a sophisticated level of transparency to the flooring.

• A safe product

Because LITE-FLOOR is made from laminated safety glass, the glass units still adhere to the interlayer film if cracks or even breakages occur. Varying the number and/or thickness of the components creates a laminated safety glass which meets most requirements.

Range

• Composition

The composition of the flooring units varies according to several parameters:

- the application location;
- the dimensions;
- the loads applied;
- the aesthetic effect sought.

The load-bearing glass elements will sustain the loads indicated, even if one of them is accidentally broken.

The size-related factors are based on national recommendations, and in particular the results of a specific study. The type of glass to be used depends on the number and type of the supports, the length to width ratio (L/W) and the type of building in which the flooring is being fitted, which will determine the safety levels required.

Two safety levels are specified:

• **Normal safety:** any low occupation density application (private homes and the like) and a potential fall height of lower than 1.5 m.

• **Reinforced safety:** any high occupation density application (public buildings) and/or a potential fall height of greater than 1.5 m.

Current thicknesses and dimensions

Thicknesses (mm)	Dimensions (mm)	
	minimum*	maximum*
24, 28, 32, 38, etc.	200 x 500	1,500 x 2,200

(*) For other dimensions, please check with us.

LITE-FLOOR is made from 566 PLANILUX. Replacing it with 566 DIAMANT offers greater transparency and reduces the risk of heat breakage.

To reduce the thickness of the flooring units in the case of large dimensions, the glass components can be heat-toughened. The protective glazing component of floor units is usually covered with anti-slip SECURIT CONTACT.

• Standard SECURIT CONTACT range

- SECURIT CONTACT EVOLUTION POINT: raised point type covering (50 % of the surface);
- SECURIT CONTACT EVOLUTION FLAT: a complete covering over the entire surface of the glass.

Note: if required, other patterns can be investigated.

• Manufacture possibilities

SECURIT CONTACT

Thickness (mm)	Dimensions (mm)
6, 8	2,000 x 1,000
10, 12	Check with us

LITE-FLOOR

LITE-FLOOR XTRAGRIP

• Basic products

The glass products of which LITE-FLOOR is composed can be of the following glass types:

- standard ^{SGG} PLANILUX;
- extra-clear ^{SGG} DIAMANT;
- heat-strengthened PLANIDUR;
- body-tinted ^{SGG} PARSOL;
- acid-etched matt finish SATINOVO or CHARME (matt surface finish produced on the underside of the flooring unit);
- sand-blasted (sand-blasted side is the underside of the unit);
- silk screen printed SERALIT (only one component);
- patterned ^{SGG} DECORGLASS or ^{SGG} MASTERGLASS (upper surface of the flooring unit);
- anti-slip SECURIT CONTACT (upper surface of the glass treated).

LITE-FLOOR cannot be composed only of toughened glasses.

• Interlayer films

The types of interlayer films available for LITE-FLOOR are:

- standard transparent;
- pearl;
- tinted (STADIP COLOR);
- with printed motifs: PET interlayered between two PVB standard films (STADIP DESIGN).

• LITE-FLOOR range

Normal safety (NS)		
Product	Composition	Thickness (mm)
STADIP F 1728	88.2	17
STADIP F 2120	1010.2	21
STADIP F 2522	1212.2	25
STADIP F 3125	1515.2	31
STADIP F 4029	1919.2	40

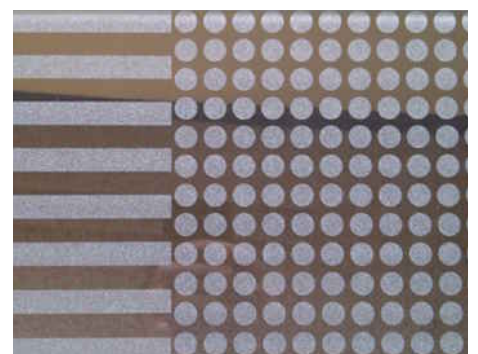
LITE FLOOR XTRAGRIP is a special, highly abrasive silk-screen print applied to the surface of the glass which provides its anti-slip quality. The enamels used are also highly mechanically and chemically resistant. This means that the anti-slip quality is therefore guaranteed over time, depending on the application location and level of traffic.

Reinforced Safety (RS)		
Product	Composition	Thickness (mm)
STADIP F 2638	888.4	26
STADIP F 3230	101010.4	32
STADIP F 3832	121212.4	38
STADIP F 4735	151515.4	47
STADIP F 5939	191919.4	59

Actual glass thickness is calculated on a case-by-case basis and is dependent on many variables. Please contact us for more details.

Processing

The maximum weight per panel is 1,000 kg. The way the LITE-FLOOR flooring and staircase units are edge-worked reduces the likelihood of breakages during transportation and installation. Visible edges can be polished while concealed edges may simply be ground.



LITE FLOOR XTRAGRIP

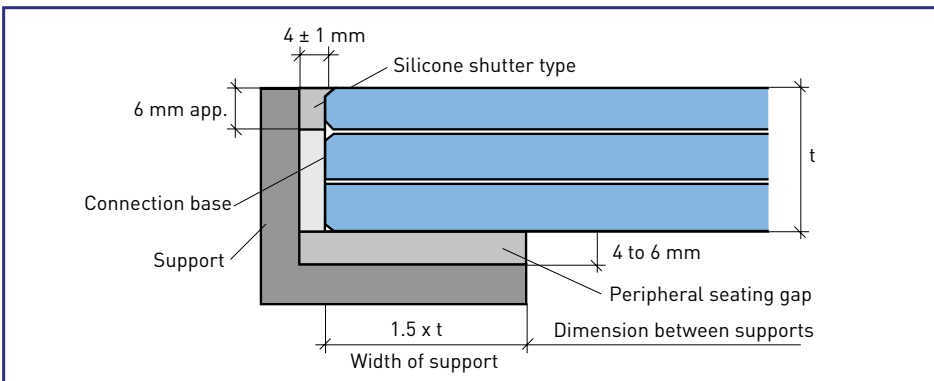
LITE-FLOOR LITE-FLOOR XTRAGRIP

Installation

Installation requires special care: tolerances must be observed, supports must be flat, fixtures and seal joints carefully selected, and so on. The method used is shown in the illustration below. The only support system we recommend of those currently available is the continuous peripheral support system shown in this brochure. The support structure must be rigid so that any deformation will be equal to, or less than, 1/500 of the length of the side in

question when the floor is under load. For psychological reasons, deflection in the centre of the flooring unit, when under operational load, may not exceed 1/200 of the smallest dimension and will be less than 10 mm. The support width is equal to, or greater than, 1.5 times the thickness of the flooring unit. However, where units are thicker than 30 mm, it is acceptable for this support width to be at least equal to the width of the flooring unit. The units rest on a flexible joint which will not harden over time, with a hardness

of around 70 to 80 DIDC (ShoreA). Where the flooring units may be slightly sloping, a sideways setting is envisaged. In addition to this, the joint flatness of the supports should not contain gaps greater than 2 mm and the upper surface of the flooring units should be level with the finished floor when no load is present. For further information, check with our technical section. LITE-FLOOR should be assessed for any chance of heat breakage when it is placed near a source of heat (radiation units, spotlights, etc.).



Theoretical installation diagram

LITE-FLOOR

Load-bearing glass components	SGG PLANILUX	SGG DIAMANT
Protective glass components	SECURIT CONTACT	SECURIT CONTACT
Light transmission	0.71	0.82
Total energy absorption of the flooring unit.	0.59	0.30

All the brands quoted in this brochure are either registered or trademarked by Saint-Gobain.



For Glassolutions contact details by country, please refer to the last page.

www.solaglas.sggs.com

Regulation

The flooring units comply with the requirements of standard EN ISO 12543.

Performances

Spectrophotometric characteristics of a LITE-FLOOR unit comprising:
 - 2 load-bearing glass components (2 x 15 mm);
 - 1 protective glass component (6 mm).

Distributor