

COLONIAL  
NOBLE

Fine historic period  
glass for authentic  
restoration



SYSTEMS

 **GLASSOLUTIONS**  
SAINT-GOBAIN



# COLONIAL

## Hand-blown restoration glass

### Description

Handmade mouth blown cylinder glass has been made in the Verrerie de Saint-Just since the 19<sup>th</sup> century with our COLONIAL glass now being the result of generations of expertise.

This fabulous glass shimmers and sparkles due to its uneven surface, with bubbles and inclusions catching and refracting natural light by day and artificial light by night.

### Applications

COLONIAL glass can be used with new and existing joinery work within traditional and historic buildings, private houses, hotels and high end apartments.

It retains the authenticity of period glass, and is ideally suited to the restoration, or recreation, of pre 1920 fenestration.

### Advantages

- Aesthetics of facades and old buildings preserved.
- Unique appearance thanks to the presence of bubbles, lines and vibrations in the glass.
- Perfect light transmission due to very high levels of transparency.



### Implementation

- Instructions for fitting provided on request by the Verrerie de Saint-Just.
- Installation need to conform to local legislation.
- The use of putties with a linseed oil base, for instance, is not permitted for laminated windows or double glazing.



# COLONIAL

## Range

	Max. dimensions	Thickness (mm)	Thermal rating
<b>COLONIAL</b> Simple extra-clear blown glass	800 x 1,000 mm	2 mm (- 0.5/+ 1.5 mm)	$U_g = 5.7 \text{ W}/(\text{m}^2.\text{K}^*)$
<b>VITRUM RESIST</b> Laminated safety glass with UV-filtering properties	500 x 700 mm	6.5 mm (+/- 1 mm)	$U_g = 5.7 \text{ W}/(\text{m}^2.\text{K}^*)$
<b>VITRUM RESIST EKO</b> Laminated safety glass with UV-filtering and insulation properties	500 x 700 mm	7.5 mm (+/- 1 mm)	$U_g = 3.7 \text{ W}/(\text{m}^2.\text{K}^*)$
<b>CLIMAPLUS COLONIAL</b> Insulated Double Glazing	800 x 800 mm	12.5 to 22.5 mm (+/- 1 mm)	$U_g = 2 \text{ to } 1 \text{ W}/(\text{m}^2.\text{K}^*)$
<b>CLIMAPLUS COLONIAL PROTECT</b> Insulated double glazing with safety, UV filtering and acoustic insulation properties	800 x 800 mm	16.5 to 28.5 mm (+/- 1 mm)	$U_g = 2 \text{ to } 1 \text{ W}/(\text{m}^2.\text{K}^*)$
<b>CLIMAPLUS COLONIAL PRESTIGE</b> Slender insulated double glazing	700 x 750 mm	9.5 to 15.5 mm (+/- 1 mm)	$U_g = 1.9 \text{ to } 1 \text{ W}/(\text{m}^2.\text{K}^*)$

\* According to standard EN 673



COLONIAL glass is produced to satisfy differing requirements, to improve thermal and acoustic capacity, resist Ultra violet damage, and enhance security.

Please do not hesitate to contact us for any inquiry.

### Aesthetic variations

Each region and period has its own window glass style. Saint-Just can reproduce colour tints, activity, bubbles and inclusions. This glass is unquestionably the finest in Europe for authentic sash window glass.

### References

- Stately Homes, Hotels and Castles: Château de Versailles, Mont Saint Michel, Het Loo Royal Palace (Netherlands)...
- Traditionally built houses, boutique hotels, Georgian Townhouses (UK, USA, Sweden, Belgium)...



# NOBLE

## Drawn restoration glass

### Description

NOBLE drawn glass offers the charm of a restoration glass in very large dimensions.

### Applications

NOBLE can be used with all joinery and carpentry work: historic monuments, private hotels, modern buildings. It is ideal for the restoration of construction work dating from 1920 to 1960.

### Advantages

- Wide choice of dimensions.
- Slight contour vibrations reminiscent of ancient glass.
- Perfect light transmission due to very high levels of transparency.

### Implementation

- Instructions for fitting provided on request by the Verrerie de Saint-Just.
- Installation need to conform to local legislation.
- The use of putties with a linseed oil base, for instance, is not permitted for laminated windows or double glazing.



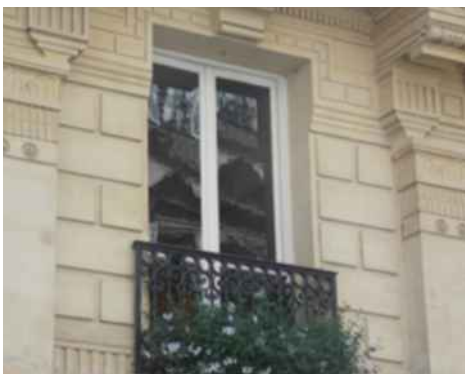
# NOBLE

## Range

	Max. dimensions	Thickness (mm)	Thermal rating
<b>NOBLE</b> Simple extra-clear drawn glass	1.500 x 1.600.mm	3 mm	$U_g = 5.7 \text{ W}/(\text{m}^2.\text{K}^*)$
	1.500 x 2.100.mm	4.5 mm	
<b>NOBLE RESIST</b> Laminated safety glass with UV-filtering properties	1.500 x 1.600.mm	6.5 mm	$U_g = 5.7 \text{ W}/(\text{m}^2.\text{K}^*)$
	1.500 x 2.100.mm	8.5 mm	
<b>NOBLE RESIST EKO</b> Laminated safety glass with UV-filtering and insulation properties	1.500 x 1.600.mm	6.5 mm	$U_g = 3.7 \text{ W}/(\text{m}^2.\text{K}^*)$
	1.500 x 2.100.mm	8.5 mm	
<b>CLIMAPLUS NOBLE</b> Insulated Double Glazing	800 x 1.600.mm	13 to 23 mm (+/- 1 mm)	$U_g = 2 \text{ to } 1 \text{ W}/(\text{m}^2.\text{K}^*)$
	800 x 2.100.mm	14.5 to 24.5 mm (+/- 1 mm)	
<b>CLIMAPLUS NOBLE PROTECT</b> Insulated double glazing with safety, UV filtering and acoustic insulation properties	800 x 1.600.mm	16 to 28 mm (+/- 1 mm)	$U_g = 2 \text{ to } 1 \text{ W}/(\text{m}^2.\text{K}^*)$
	800 x 2.100.mm	17.5 to 29.5 mm (+/- 1 mm)	
<b>CLIMAPLUS NOBLE PRESTIGE</b> Slender insulated double glazing	750 x 1.600.mm	10 to 16 mm (+/- 1 mm)	$U_g = 1.9 \text{ to } 1 \text{ W}/(\text{m}^2.\text{K}^*)$

\* According to standard EN 673

NOBLE glass is produced to satisfy differing requirements, to improve thermal and acoustic capacity, resist Ultra violet damage, and enhance security. Please do not hesitate to contact us for any inquiry.



## Variations

The Verrerie de Saint-Just also offers an extensive range of patterned glass in order to maintain the buildings authenticity.

## References

- Stately Homes, Hotels and public places: Gare de l'Est, and National Fine Art School (Paris), «The Grand» Hotel (Amsterdam)...
- Traditionally built houses and boutique hotels.





# COLONIAL NOBLE



All the brands quoted in this brochure are either registered or trademarked by Saint-Gobain.



For Glassolutions contact details by country, please refer to the last page.

[www.glassolutions.co.uk](http://www.glassolutions.co.uk)

Distributor

By Muchimuchi - Saint-Gobain Glass Solutions France - RCS Nanterre 447768169 - 06/14 - May be subject to change